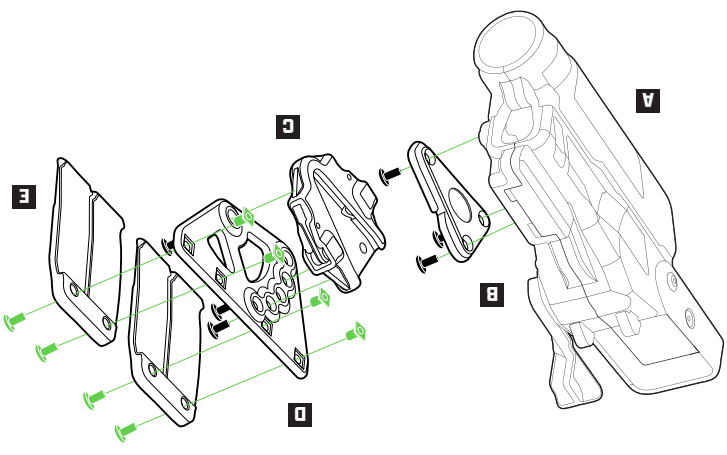
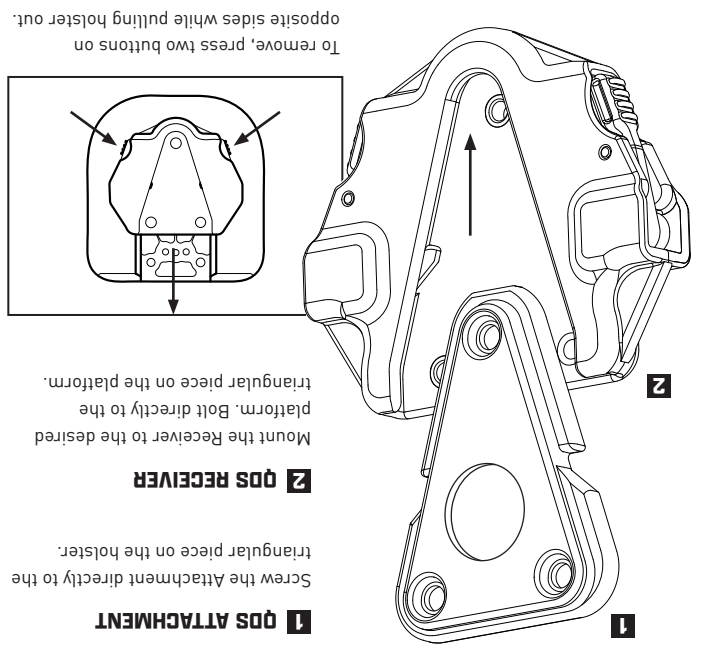


**(1)** Attach the Quick Disconnect Receiver to the MOLLE Plate using the 10-32x.375 screws. **(2)** Once secure, attach the MOLLE Forks to the MOLLE Plate by tightening the 8-32x.375 screws into the 8-32 T-nut. **(3)** Attach the Quick Disconnect Attachment to your Rapid Force Shell using the 10-32x.375 screws. **(4)** Slide the Quick Disconnect Attachment into the Receiver. **(5)** To release, press the two buttons on opposite sides while pulling the holster w/ Attachment out of the Receiver.



- A** RAPID FORCE SHELL
- B** QDS ATTACHMENT
- C** QDS RECEIVER
- D** MOLLE PLATE
- E** MOLLE FORKS

**MOLLEY QDS ASSEMBLY** (sold separately)



- 1** QDS ATTACHMENT  
Screw the Attachment directly to the triangular piece on the holster.
- 2** QDS RECEIVER  
Mount the Receiver to the desired platform. Bolt directly to the triangular piece on the platform.

The QDS Attachment mounts to the holster and is easily inserted into the QDS Receiver mounted on the Drop Leg, MOLLE, Belt Slide, Surface Mount or Paddle. With the QDS Receiver, you'll only need one QDS Attachment for the holster to work with the QDS Receiver on any carry configuration in your setup.

**QUICK DISCONNECT SYSTEM** (sold separately)

# RAPID FORCE™

## QUICK DISCONNECT SYSTEM

ACCESSORIES SOLD SEPARATELY



**BELT SLIDE**



**LOCKING BELT SLIDE**



**PADDLE**



**DYNAMIC DROP LEG**



**MOLLE**

**PROFESSIONAL GRADE**





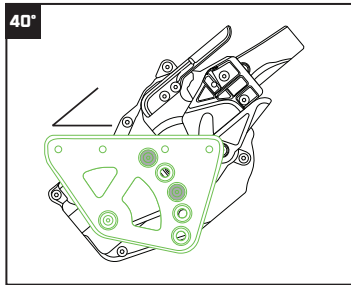
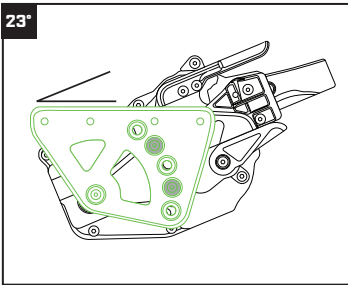
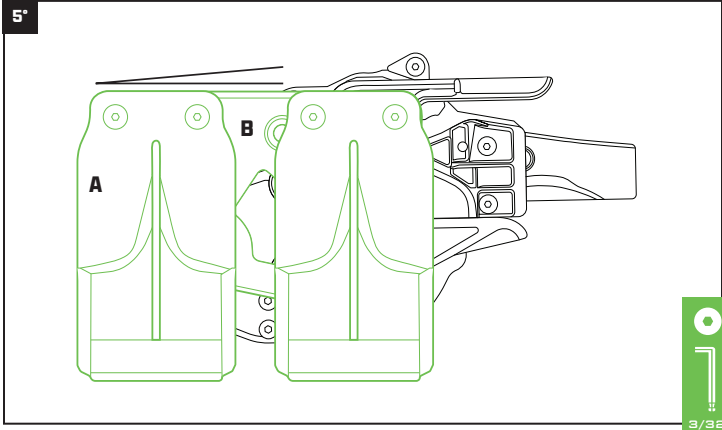
# RAPID FORCE™

## MOLLE CARRY

<EXPANSION>

## MOLLE CANT

To adjust Cant, remove **(A)** MOLLE Forks from **(B)** MOLLE Plate. Remove the three adjustment screws connecting the holster using your 3/32" Allen Key. Adjust to your desired draw angle. Re-attach holster to the MOLLE Plate. Lastly, re-attach your MOLLE Forks to the MOLLE Plate.



## MOLLE STATIC ASSEMBLY

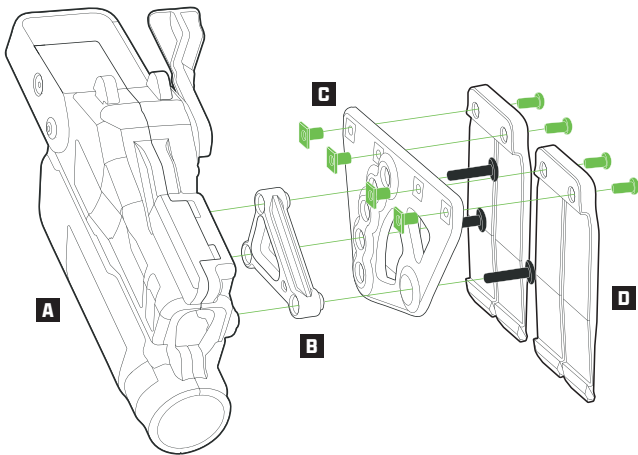
(sold separately)

**A** RAPID FORCE SHELL

**C** MOLLE PLATE

**B** TRIANGULAR SPACER

**D** MOLLE FORKS



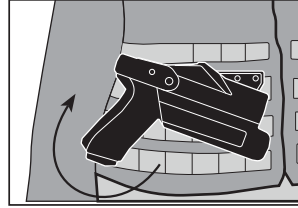
**(1)** Line Triangular Spacer up to the screw holes on the MOLLE Plate. Insert 10-32x.813 screws to assist with alignment. **(2)** Hold your Rapid Force Shell up to the Triangular Spacer and use your Allen Key to screw all the way down. **(3)** Attach the MOLLE Forks to the MOLLE Plate, tightening the 8-32x.375 screws into the 8-32 square T-nut.



## HOW TO WEAR

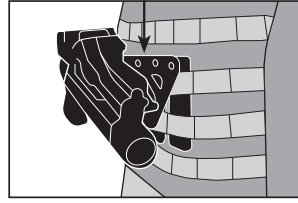
### 1 ADJUST YOUR CANT

Adjust your Cant to either 5°, 23°, or 40° to optimize your draw.



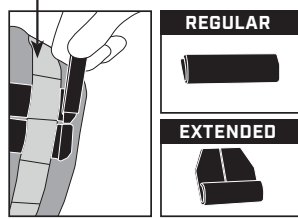
### 2 CHOOSE YOUR POSITION

Slide the MOLLE Forks down into your MOLLE Webbing.



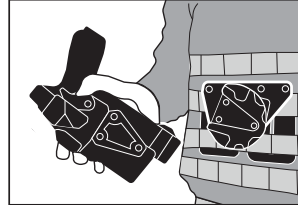
### 3 LOCK INTO PLACE

Once your holster is secure use the Regular MOLLE lock for standard webbing or the Extended lock for small or irregular webbing. Slide the appropriate MOLLE lock on to ensure it will not slip or move.



### 4 EASILY TRANSITION

Make an easy transition from any Rapid Force Expansion with the Quick Disconnect System. (sold separately)



## DISCLAIMER

**WARNING!** It is the responsibility of the user to ensure that the holster is inspected and maintained daily. Due to the variety of potential stress and strain placed on the holster being completely dependent upon the user's personal or work-related needs, there can be no specified date to which the user can be recommended to replace the holster with a new one. Therefore, the user is responsible to assess and determine whether the holster maintains quality and a state of function that matches the described design and operation of the holster.

Proper maintenance of the holster is the user's responsibility to check and verify proper functioning daily. This includes the tightness of screws, retention of the holster, wear and tear of the exterior and interior components, and any hardware. If any of these components are unable to function or the user feels that the integrity and use of the holster have been compromised, DISCONTINUE USE and contact Alien Gear Holsters about the issue.

Alien Gear holsters are specifically designed and built to fit a specific make and model of firearm, as well as a specific handedness. Before use, be sure to test the holster to ensure that the firearm intended for use matches the specifications of the holster.

#### Holstering:

- Ensure firearm is pointed in a safe direction, away from the presence or direction of any individual.
- Ensure the holster is free and clear of any potential objects that could interact with the trigger.
- If you detect resistance or any obstructions that prevent proper mounting, immediately stop attempting to seat or mount the firearm into the holster. Conduct a thorough investigation of the holster for any objects or incorrect functions.
- Unless the user has received proper training on how to holster their firearm without looking, always watch the firearm being secured into the holster.

For more information, please visit <https://aliengearholsters.com/disclaimer>



MADE PROUDLY

Questions? 208 215 2046

AlienGearHolsters.com